

Overview

The printer allows for the addition of four captions to a single image. Captions can be added to any side of an image and can be any image format the printer supports.

How Captions are Added

Before an image is converted and printed, the printer's hard disk is searched for caption images. If any are found, they are appended to the image being printed. If more than one caption image is found, each gets appended to the final image at the appropriate location.

The printer allows four captions to be specified. They correspond to the four sides of the print (top, bottom, left, and right). The orientation is assumed to be from the perspective of the **physical page** and not the image being printed. In other words, the top of a **physical page** is always the physical top edge of the paper in portrait orientation, and not the top of the image being printed.

Color captions will be automatically converted to greyscale if a black ribbon is installed in the printer.

Case 1, Unscaled Device

If an image is sent to the Unscaled Device, each caption (if any) gets appended to the image before the image is converted to the printer's final format. The resulting combined image will be handled as if it were received from the host. This is important to consider because all image processing functions (gamma, TCR, MCM, etc.) will be applied to the original image and captions alike.

Case 2, Scaled Device

If an image is to be scaled and captions are present, the image is first scaled horizontally to fit the printable width of the paper, less, the total widths of the left and right captions, and then scaled vertically to fit the printable height of the paper, less, the total heights of the top and bottom captions.

Considerations When Using Captions

There are some considerations on the caption image size that need to be observed. An image used as a caption must be appropriately sized and placed in order to have the least amount of impact on the original image. For example, if a wide caption is placed at the left side of the original image, the original image will be pushed to the side of the paper and may even disappear from the print. Some of these effects are shown in Figures 1 through 4.

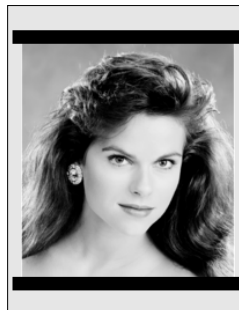


Fig. 1: Scaled image with top and bottom captions appropriately sized.



Fig. 2: Unscaled image with a wide left caption.

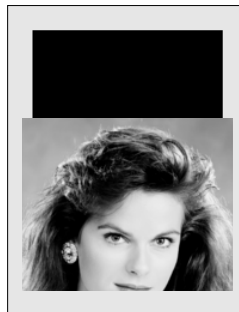


Fig. 3: Unscaled image is pushed down to make room for a large top caption.

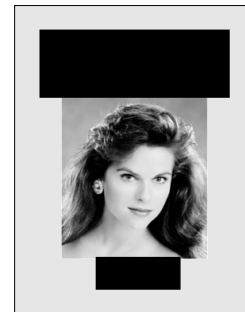


Fig. 4: Scaled image with large top and bottom captions. The original image and both captions are scaled down in order for the concatenation of the three images to fit on the page.

As a general rule, top and bottom captions must be as short as possible, while left and right captions must be as narrow as possible.

Storing and Removing Captions

Captions are added by sending an image file to a Caption Device which will store the image on the printer's internal hard drive. There are five Logical Devices used for this purpose.

Logical Devices 101 through 104 expect an image file. The contents of a file sent to Logical Device 100 is ignored and can therefore be anything, it is only used to instruct the printer to delete all caption images from the printer's hard drive.

Logical Devices Assigned to Captions

Logical Device	Function
Device 100	Remove all Captions
Device 101	Top Caption
Device 102	Bottom Caption
Device 103	Left Caption
Device 104	Right Caption

Files sent to Logical Devices 100 through 104 will overwrite whatever captions already exist in the printer. Therefore, only one caption can be added to each side of an image.

Examples

The following examples show how to use the **lpr** command to send and remove captions:

lpr -P102 file.pcx	Use "file.pcx" as bottom caption.
lpr -P100 anyfile	Use "anyfile" to remove all caption files.

The next example shows how a right side caption can be stored in the printer using FTP:

ftp myprinter

Connected to myprinter

220 np1600 FTP server (Version 5.60) ready.

Name (myprinter:username): **john**

331 Use printer # [0-2, 8, 9, 10, 11-99, 100-104] for password.

Password: **104**

Note: Password will not echo.

230 User john logged in on Caption Right Device.

ftp> **bin**

200 Type set to l.

ftp> **put sidecap.tif**

Send caption.

ftp> **quit**

Copyright © 1995, 1998 by Codonics, Inc. Codonics, Codonics logo, and NP-1600 are trademarks of Codonics, Inc. All other registered and unregistered trademarks are the property of their respective owners. Specifications subject to change without notice. Printed in U.S.A. Patents Pending. CDNX-20-125 Rev. 980130

Get it all with just one call
1-800-444-1198



CODONICS

We bring the future into focus

17991 Englewood Drive
Middleburg Heights, OH 44130 USA
(440) 243-1198
(440) 243-1334 Fax
Email info@codonics.com
www.codonics.com