

Overview

The 35mm SlideMaker™ is a special version of FMF™ (Fixed Multiformating™) that allows users to create prints of their images in a format identical to that of 35mm slide film. The 35mm SlideMaker creates filmstrips containing individual slides of the user's images. The slides can be cut out of the transparency, mounted in standard 35mm slide mounts and projected using a standard 35mm slide projector.

Description

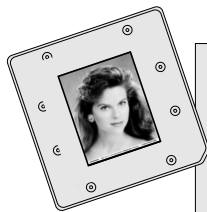
The 35mm SlideMaker fits 24 slides, or "cells," onto any standard page of output. The slides are arranged as 6 filmstrips of 4 slides each.

Images received by the 35mm SlideMaker Device are scaled and rotated, if necessary, so as to produce the largest possible image in each cell.

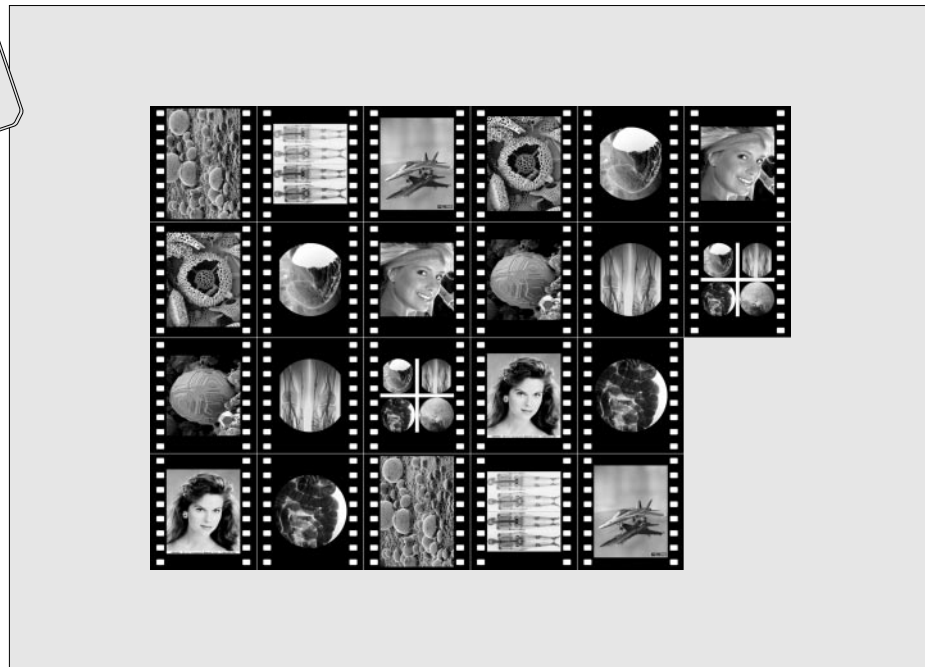
FTP, LPR, and the Parallel Port can be used to transfer images to the 35mm SlideMaker Device. Images are separated by **username** to keep all images received from a user together on the same page. This allows multiple users to access the same 35mm SlideMaker Device.

The current gamma, contrast, TCR, and MCM color corrections are applied to each image just as with any other Logical Device. The scaling method used is fixed at Lanczos, which produces the best possible final images. The 35mm SlideMaker will print the page when all cells on the page have been filled or when a **PRINT** command is received. If too many images are received for one page, additional pages are output.

Support for the 35mm SlideMaker is assigned to Logical Device 135.



Mounted Slide



Output Example (22 Images Sent to SlideMaker Device)

35mm SlideMaker Control Commands

There are three control commands recognized by the 35mm SlideMaker which enhance the flexibility of this feature.

These commands are sent to the printer as files containing simple ASCII text. Any text editor can be used to create a file containing a command. Only one command will be accepted per file. If multiple commands are required, they must each be in a separate file. Commands may be sent as uppercase or lowercase.

PRINT Command

PRINT

The **PRINT** command will force the printer to output the contents of the current page and reset for a new page of images. This command is useful if there are not enough images to fill an entire page. Unused cells will be left blank. If a **PRINT** command is sent after a page has just printed, no output will be generated. This is important because a **PRINT** command can be sent at the end of any 35mm SlideMaker sequence without generating redundant output.

SETUP Command

```
SETUP { COPIES # }  
{ ASPECT X_aspect Y_aspect }
```

SETUP will define the characteristics for a given 35mm SlideMaker Device. It allows the user to control aspects of the 35mm SlideMaker session by specifying parameters which apply to the current 35mm SlideMaker Device only.

COPIES is a parameter that defines the number of copies to be printed of each page of slides. The **COPIES** parameter is needed because information from LPR and FTP specifying the number of copies to print of an image is not propagated through to the 35mm SlideMaker. A numeric value from **1** to **99** must be specified after the **COPIES** parameter. If this parameter is not specified, 1 copy is assumed.

The **ASPECT** parameter can be used to scale the images by different amounts in the x- and y-directions to modify their aspect ratio. With aspect ratio modification, one direction of an image is reduced in size while the other direction is held the same. The aspect ratio factor is determined by **X_aspect** divided by **Y_aspect**. If the aspect ratio factor is less than 1.0 then the images are reduced in the x-direction in proportion to the factor. If the aspect ratio factor is greater than 1.0, then the heights of the images are reduced in proportion to the reciprocal of the aspect factor. Aspect ratio adjustment is per-

formed on the images in the orientation in which they are received. Images with modified aspect ratios are still scaled and rotated to fit maximally in the cell.

CANCEL Command

CANCEL

The **CANCEL** command will clear all images being processed on a given 35mm SlideMaker Device and reset the device so the next image will be treated as the first image. **CANCEL** will only clear and reset the 35mm SlideMaker Device for the user sending the command. It is highly recommended that a user send a **CANCEL** command to the printer before sending a sequence of images to be multiformatted. This will clear any partial jobs that may have been started on that particular 35mm SlideMaker Device. Powering the printer off and on will clear all 35mm SlideMaker jobs.

35mm SlideMaker Example Session

The following example shows how to use the 35mm SlideMaker to create a page of four slides.

Image File:

TIFF, 8-bit, grayscale (1024 x 512)
Image will be scaled to fit 1st. cell.

Image File:

PCX, 8-bit, color (640 x 480)
Image will be scaled to fit 2nd. cell.

Image File:

BMP, 24-bit, color (320 x 240)
Image will be scaled to fit 3rd. cell.

Image File:

GIF, 8-bit, color (640 x 480)
Image will be scaled to fit 4th. cell.

Command File:

PRINT

Print the current 35mm SlideMaker image, the remaining unused cells are left blank.

Copyright © 1996, 1998 by Codonics, Inc. Codonics, Codonics logo, SlideMaker, FMF, Fixed Multiformating, TCR, MCM, and NP-1600 are trademarks of Codonics, Inc. All other registered and unregistered trademarks are the property of their respective owners. Specifications subject to change without notice. Patents Pending. Printed in U.S.A. CDNX-20-346 Rev. 980129

Get it all with just one call
1-800-444-1198



17991 Englewood Drive
Middleburg Heights, OH 44130 USA
(440) 243-1198
(440) 243-1334 Fax
Email info@codonics.com
www.codonics.com