

Retro Print

Retrofit Bundle DD-14CSI(Cesium Iodide)+HRG1



Convert Analog X-Ray Rooms, CR and older DR Panels Simply and Cost Effectively



CODONICS

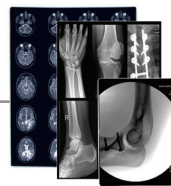
Defining Image Distribution

Retro Print

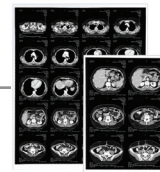
Retrofit Bundle DD-14CSI(Cesium Iodide)+HRG1

Overview

Codonics Retrofit Bundle DD-14CSI+HRG1 offers a complete solution for effortlessly upgrading your analog x-ray system or CR to a modern digital solution. Our wireless DR panel can conveniently fit into your current table, wall bucky, mobile x-ray system or just simply be used at the bedside. The sync-less x-ray trigger in the panel will not change your workflow or the x-ray hardware, yet greatly improves your efficiency. The Horizon Multi-media Imager will complete the solution by providing an array of digital hardcopy media outputs. The return on investment (ROI) is significant in FTE expense savings.



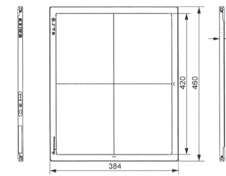
BLUE & CLEAR FILM



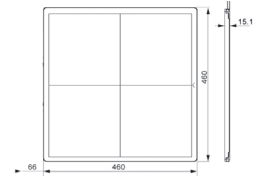
GRAYSCALE PAPER



DD-14CSI+HRG1
14x17



DD-CNG-14-17 Option
17x17



Key Benefits:

- Fast and seamless upgrade without any modification to your existing x-ray system creates digital images in seconds, significantly reducing your existing exam times and greatly improving productivity
- Native mini PACS architecture enables full DICOM network connectivity
- When combined with our versatile digital hardcopy, referring physicians benefit from high quality prints for patient communication and file copies

Key Components:

- 1417V3 CSI Cesium Iodide
- Horizon G1 (upgradeable to Horizon G2 or GS)
- Console software offering more than just image acquisition

Imager

Print Technology: Direct thermal (dry, daylight safe operation)
Spatial Resolution: 320 DPI (12.6 pixels/mm)
Throughput: Up to 100 films per hour
Time To Operate: 5 minutes (ready to print from "off")
Grayscale Contrast Resolution: 12 bits (4096)
Media Inputs: One supply cassette, 80 - 100 sheets
Media Outputs: One receive tray, 50-sheet capacity
Media Sizes: 8" x 10", 14" x 17" (blue and clear), 11" x 14" (blue) DirectVista® Film
 Optional A, A4, 14" x 17" DirectVista Grayscale Paper
Dmax: >3.10 with DirectVista Film
Archival: >20 years with DirectVista Film, under ANSI extended-term storage conditions
Media Supply: All media is pre-packaged and factory sealed
Interfaces:
 Standard: 10/100/1,000 Base-T Ethernet (RJ-45), Serial Console
Network Protocols:
 Standard: 24 DICOM connections, FTP, LPR
 Optional: Windows network printing
Image Formats: Standard: DICOM, TIFF, GIF, PCX, BMP, PGM, PNG, PPM, XWD, JPEG, SGI (RGB), Sun Raster, Targa
 Optional: PostScript™ compatibility
Image Quality: Manual calibration
Image Control: Gamma, Contrast, Polarity, Rotation, Scaling, Anti-aliasing
Sheet Control: Density Adjustment (Dmax), Look-Up Tables (LUT), Image Warnings, Captions, Sheet Coverage, Border Fill, Crop Anchor

Sheet Formatting: 1:1-1:81; Variable Multi-Formatting (VMF™), Fixed Multi-Formatting (FMF™)
Control Panel: Large, backlit LCD display, Status lights include Online, Alert, Fault, Active Power and Menu navigation buttons
Processor: Intel
Memory: 1GB
Hard Disk: SSD, 32GB (24GB available for spooling)
Removable Storage: USB for software upgrades
Smart Card: 72 KB for storing configuration data
Power:
 Universal Input: 100 - 120/230V~ 50/60 Hz, 400W printing, 45W idle
Heat Emission: Maximum 400W, 1,366 BTUs /hr. printing, 45W, 153 BTUs /hr. idle 66 lbs. (30 kg.)
Weight:
Engine
Dimensions: 14.5" (37 cm) H, 20.5" (52 cm) W, 24" (61 cm) L
Environment:
Operating Temperature: 15 - 30°C
Storage: -22 - 50°C
Operating Humidity: 10 - 70% R.H. (non-condensing)
Regulatory: Full medical device compliance including Class 2 FDA and Class I MDR 2017/745/EU (CE), GMP/QSR, ISO 13485:2016/NS-EN ISO 13485:2016, Electrical Safety IEC 60601-1 Ed. 3.1 and EMC/EMI: FCC Class A and IEC 60601-1-2: Ed. 4 for Professional Healthcare Facilities



Console Software:

- Image acquisition
- Detector calibration
- Gridline suppression (for static grids with 40 lines/cm and 43 lines/cm)
- AIP (Advanced Image Processing)
- DICOM Store and Storage Commit
- DICOM Print
- DICOM Modality Worklist (MWL) / Modality Performed Procedure Steps (MPPS)
- DICOM viewer
- Auto window level
- Measurements and annotation
- Patient CD
- Mini PACS
- Manual stitching for long film (Automated stitching optional)
- Multi detector support (optional, up to 3 FPD)
- Flyviewer (Tablet support)

Wireless Cassettes

Detector Technology: Amorphous Silicon
Scintillator: CSI (Cesium Iodide)
Active Area:
 14x17: 345.6mm x 420mm
 17x17: 427mm x 427mm
Pixel Pitch: 14x17: 150 µm; 17x17: 139 µm
Number of Pixels:
 14x17: 2304 x 2800
 17x17: 3072 x 3072
AD Conversion: 16bits
Cycle Time: 8s
Data Interface/Detector: WIFI (802.11ac)/Ethernet
Control Trigger Mode: i-Sync 2 (Auto Exposure Detection) Software
Wireless Mode: 2.4G/5G, with internal AP
Battery: 5h (Full performance)
Charging Time: ≤3h
Shock Tolerance: High
Water Proof: IPX1
Limiting Resolution: 14x17: 3.3 lp/mm; 17x17: 3.6 lp/mm
Accessories: Charging dock, adapter, cables, 2 batteries
Operating Temperature: 5 - 35°C
Storage Temperature: -20 - 55°C
Operating Humidity: 10 - 90%
Storage Humidity: 5 - 95%
Dimension:
 14x17: 384 x 460 x 15mm
 17x17: 460 x 460 x 15.1mm
Weight:
 14x17: 3.6kg; 17x17: 4.6kg
Power Consumption: Max. 15W (Full performance)
Adapter:
 AC input: 110-240V, 50-60Hz
Regulatory: Medical device compliance Class IIB MDD-CE 93/42/EEC, GMP/QSR, EN ISO 13485:2016, IEC 60601-1 Safety & IEC 60601-1-2 EMC/EMI and FCC Class B for Healthcare Facilities (1417V3-TSI FCC 2ACHK-02112031 & 1717V3-VSI FCC 2ACHK-02110113)

Call Codonics today at **+1.440.243.1198** or visit **www.codonics.com** for more information.

All registered and unregistered trademarks are the property of their respective owners. Specifications subject to change without notice. www.codonics.com/ip/patents/ Copyright © 2006-2022. Codonics Inc. 10/2022



We bring the future into focus

17991 Englewood Drive
 Middleburg Heights, OH 44130 USA
 +1.440.243.1198
 +1.440.243.1334 Fax
 Email info@codonics.com
 www.codonics.com